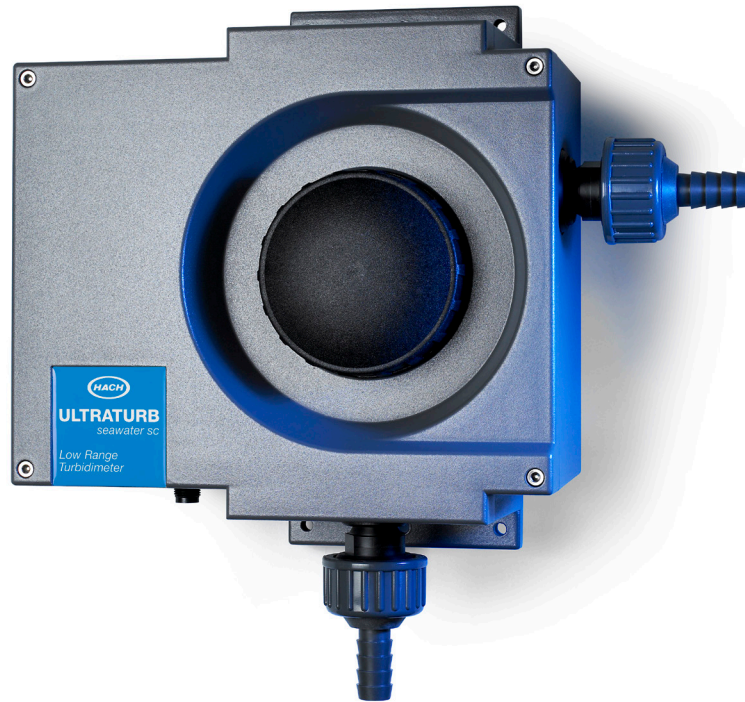




Ultraturb Seawater sc Sensor

Applications

- Drinking Water
- Wastewater
- Power Generation
- Industrial



The turbidity bypass sensor that brings clarity

Large measuring range: 0.0001 - 1,000 NTU

The Hach® Ultraturb Seawater sc sensor measures turbidity from 0 to 1000 FNU (NTU) for a wide variety of low to medium range turbidity applications. Use it to effectively monitor conventional filtered water processes, effluent water, distribution systems, and elevated tanks where small-sized particulates or air entrapment may be an issue.

Self-cleaning Sample Chamber Option

The Ultraturb Seawater sc sensor is available with an automatically self-cleaning sample chamber that guarantees stable measured values. The silicon wiper blades inside the sample chamber are held in place with a magnetic coupling wheel to further keep the sample chamber intact.

Suitable for seawater, brackish water, raw water and other applications

The Ultraturb Seawater sc sensor is resistant to salt concentrations up to 65 g/L.

Ratio Methodology Detects Sample Chamber Fouling

The Ultraturb Seawater sc sensor uses ratio methodology with detection at 90° and 180° to minimize reflections in the measuring cell and on the windows. In this way, fouling of the sample chamber is detected earlier than with a single detection system.

Compatible with Hach Multi-Sensor, Multi-Parameter Digital Controller

The Ultraturb Seawater sc sensor can be used with Hach's sc Digital Controllers. The SC4500 controller accepts up to two sensors and the SC1000 accepts up to eight sensors. Multiple controllers can be networked to accommodate many more sensors and parameters, reducing the cost per measuring point. Just plug in any Hach "plug and play" digital sensor and it's ready to use without software configuration. "Plug and play" connectivity means there's no complicated wiring or set up. Network the Ultraturb Seawater sc sensor with any of Hach's digital sensors for measuring dissolved oxygen, ORP, conductivity, and many other parameters.

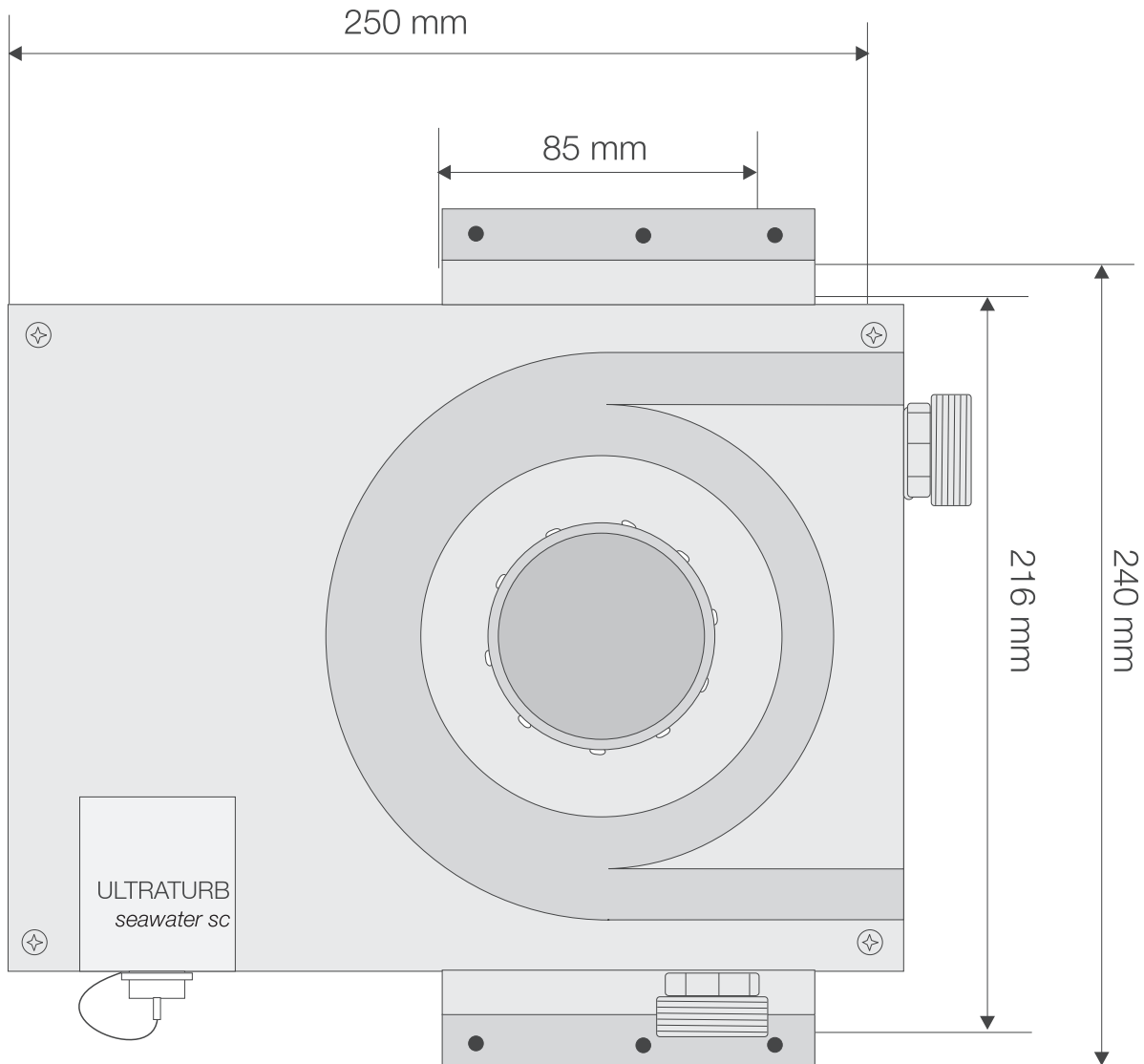
The Hach Ultraturb Seawater sc sensor meets the ISO 7027 turbidity requirements for on-line process turbidity.

Technical Data*

Measurement Method	90° infrared pulse scattered light technique in accordance with DIN EN ISO 7027
Range	0.0001 - 1000 NTU (TE/F, NTU, FNU) can be programmed as required (0.001-250 EBC = 2500 ppm SiO ₂) (Note: 1 FNU is equivalent to 1 NTU)
Resolution	0.0001 to 0.9999 / 1.000 to 9.999 / 10.00 to 99.99 / 100 to 1000 FNU (NTU)
Accuracy	± 0.008 FNU ±1% of reading whichever is greater (0 - 10 FNU)
Repeatability	± 0.003 FNU or ± 0.5% of reading (whichever is greater) from 0 - 2 FNU
Response Time	1 - 60 s (programmable)
Verification	Stablcal
Operating Temperature Range	2 - 40 °C (36 - 104 °F)
Sample Temperature	Max. 50°C (122°F)
Sample Flow Rate	0.2 to 1 L/min
Pressure Range	6 bar at 20 °C (87 psi at 68 °F)
Inlet	13 mm ID Tubing or fixed connection (PVC system component pipework)
Outlet	13 mm ID Tubing or fixed connection (PVC system component pipework)
Automatic Wiper	Yes
Material	Housing: ASA; Window: Quartz; Wiper Blade: Silicon; Wiper Shaft: stainless steel 1.4571; Wiperarm: titanium alloy
Enclosure Rating	IP55
Dimensions (H x W x D)	240 mm x 250 mm x 110 mm
Weight	Approx. 1.5 kg (3.3 lbs.)
Display	Display provided through connection with Hach sc Controller

*Subject to change without notice.

Dimensions



Order Information

Ultraturb Seawater sc sensor with Auto Clean

- LPV415.99.12002** Ultraturb Seawater sc sensor, 0.35 m cable
- LPV415.99.82002** Ultraturb Seawater sc sensor, 1 m cable
- LPV415.99.22002** Ultraturb Seawater sc sensor, 5 m cable (3.3 ft)
- LPV415.99.32002** Ultraturb Seawater sc sensor, 10 m cable

Note: A Hach SC controller is required to operate the Ultraturb sensor, controller must be purchased separately.

SC1000 Controller Options

- LXV400.99.1R572** SC1000 Probe Module, 4 Sensors, 4x 4-20mA Out, 4x 4-20mA In, 4x Relays, 100-240 V AC with Conduits
- LXV400.99.1B572** SC1000 Probe Module, 4 Sensors, 4x 4-20mA Out, 4x 4-20mA In, Modbus® RS485, 4x Relays, 100-240 V AC with Conduits
- LXV400.99.1F572** SC1000 Probe Module, 4 Sensors, 4x 4-20mA Out, 4x 4-20mA In, Profibus® DP, 4x Relays, 100-240 V AC with Conduits
- LXV400.99.1R572** SC1000 Probe Module, 4 Sensors, 4x 4-20mA Out, 4x 4-20mA In, 4x Relays, 100-240 V AC with Conduits

Spare Parts

- LZV275** Set of 4 wiper blades
- LZV842** Wiper holder Ultraturb Seawater
- 6122400** Digital Extension Cable, 1 m
- LZX848** Digital Extension Cable, 5 m
- LZX849** Digital Extension Cable, 10 m
- LZX850** Digital Extension Cable, 15 m
- LZX851** Digital Extension Cable, 20 m
- LZX852** Digital Extension Cable, 30 m
- LZX853** Digital Extension Cable, 50 m

Calibration Tools

- 246142** Formazin turbidity standard, 4000 NTU, 100 mL
- LZV451** Calibration/Cleaning Kit
- LZV325** Filters with Apparatus; for zero calibration (0.2 micron)



World Headquarters: Loveland, Colorado USA | hach.com

United States 800-227-4224 fax: 970-669-2932 email: orders@hach.com
Outside United States 970-669-3050 fax: 970-461-3939 email: int@hach.com

©Hach Company, 2024. All rights reserved.

In the interest of improving and updating its equipment, Hach Company reserves the right to alter specifications to equipment at any time.

DOC053.53.35350.Feb24